

insite

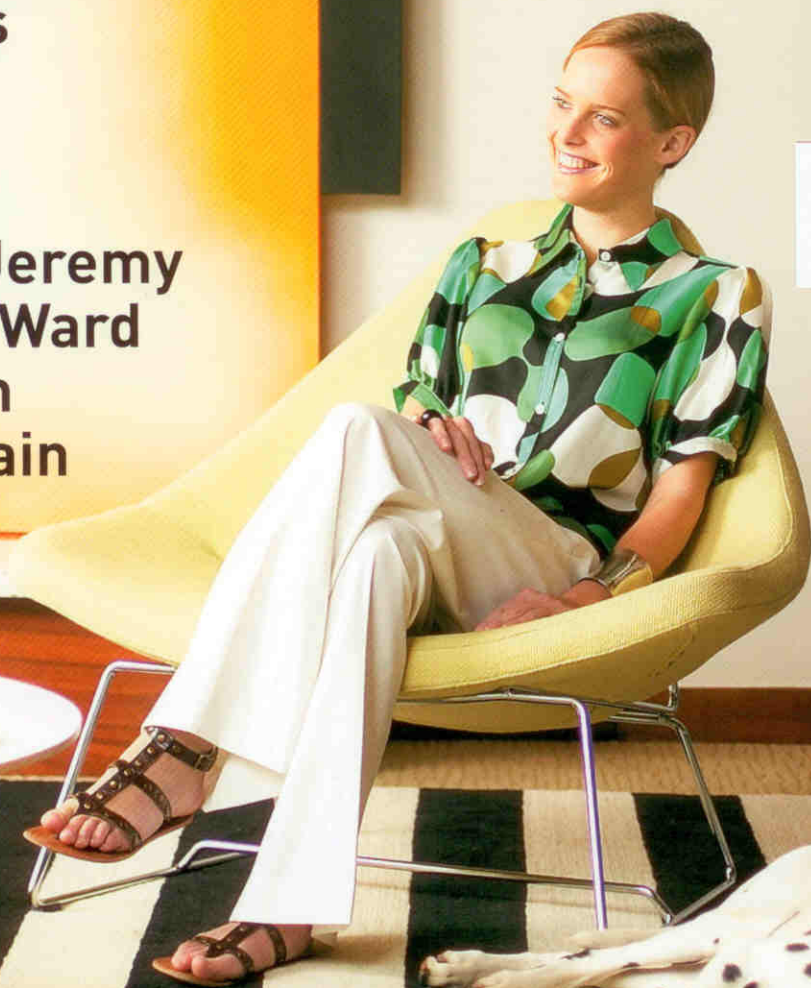
HOMES
ANTIQUES ART

Pre-fabulous:
The pod house
Cool & collectible
antiques

Artists Jeremy
Kirwan-Ward
and Wim
Boissevain

RETRO EDGE

New-age style



Spring 2007 \$9.95

ISSN 1449-9150

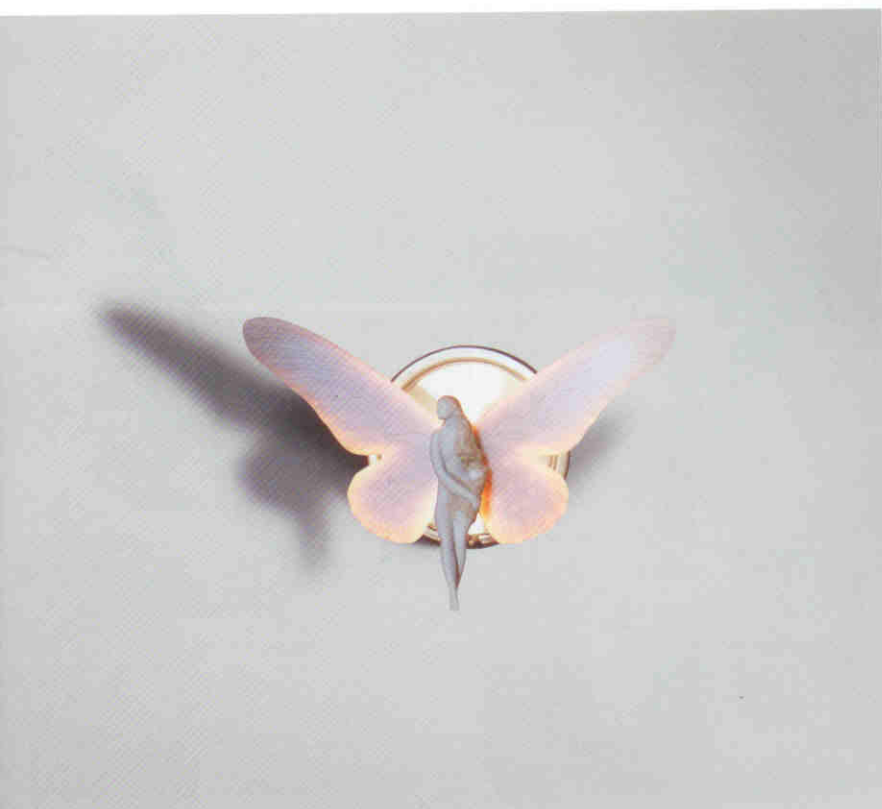


9 771449 915002

DESIGN

SYDNEY DIRECTIONS

WORDS PRUE GIBSON



MOORISH BITS

In 1953 on the outskirts of Valencia, Spain, brothers Juan, Jose and Vicente L'ladro built a Moorish kiln to pursue the ancient tradition of porcelain design. L'ladro's porcelain figurines have long been acknowledged for their beauty and delicacy. However, as the international firm has developed over the past 50 years, L'ladro has expanded its vision to produce homeware designs that are more relevant to contemporary living. In Sydney, L'ladro designers have been producing new home decor products that maintain the whimsical romantic nature of the original Spanish concept. Porcelain mirrors, lampshades, chandeliers, tableware and bathware products have been constructed with delicate detail. Of particular interest is their new Re-cyclos Magical collection. A collaboration between German designer Bodo Sperlein and art director Jaime Hayon, it represents the visionary use of porcelain imagery in a new context and includes light fittings that are part-sculpture and part-functional wall light. Fairies, seashells and butterflies, made from the finest porcelain, imbue the pieces with fragility and a sense of romance. *L'ladro Australia, Leo Wiles, (02) 9417 0241, 0409 773 787, lladro.com.*

48 Insite spring 2007



TALENT STACK

David Knott is a young, Sydney-based industrial designer with an unquenchable passion for furniture and lighting design. His new 036 pendant light looks like a pack of cards, spinning in space, comprising two metal chassis and 36 blades that snap into place. The lights are fully recyclable. He's considered environmental issues by designing the components to nest together during production, to reduce material waste. David's Royal Mail letterbox has been entered into this year's Bombay Sapphire Design awards which carry a \$30,000 scholarship. The letterbox is a porcelain and formed steel structure with a UV lid and was designed to meet Australia Post standards. Patterns and colours can be sprayed on to the glass. *David Knott is a designer to watch, 0407 638 688, (02) 8336 9809, knott.com*

