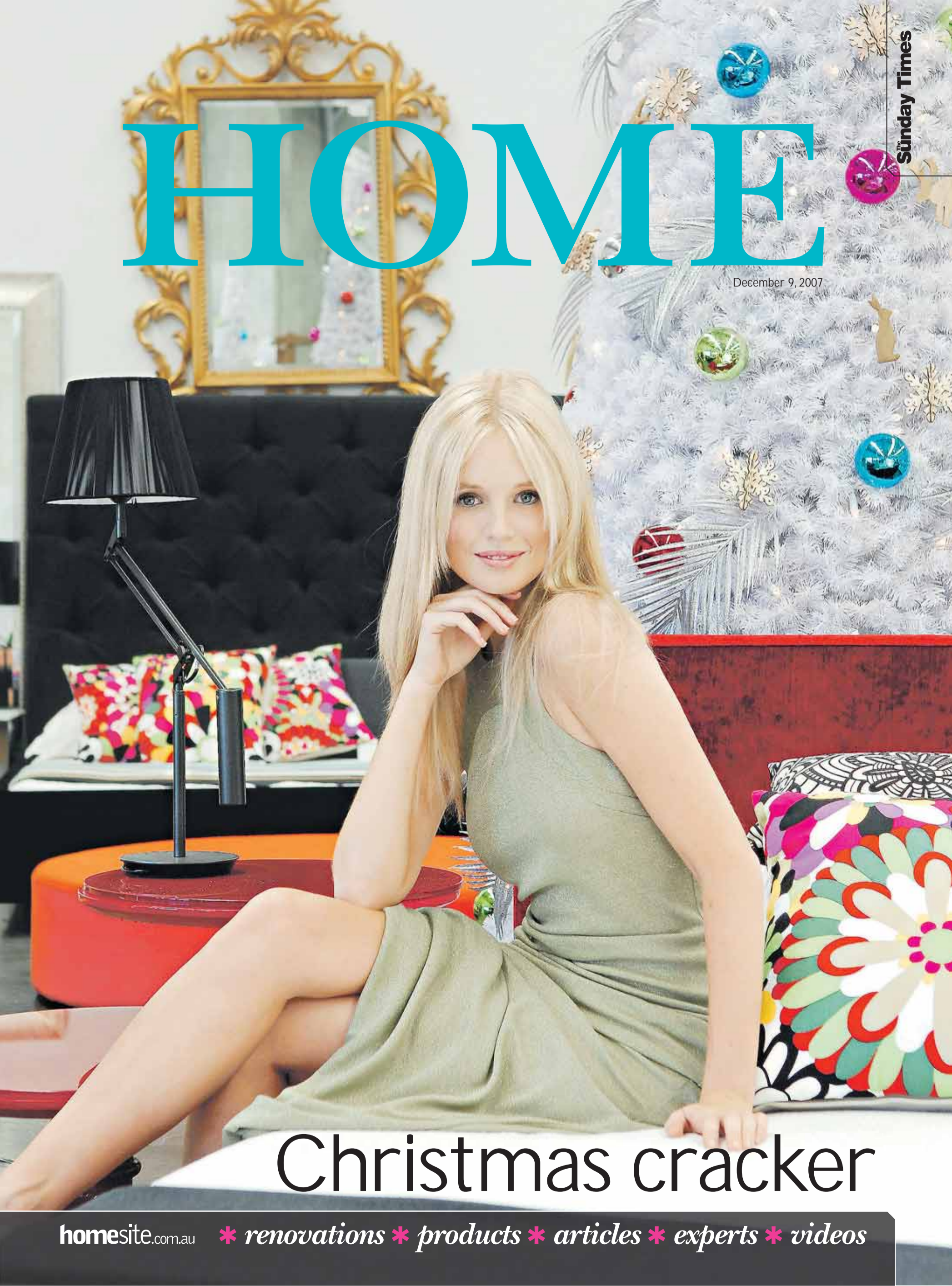


# HOME

December 9, 2007



## Christmas cracker



18

features editor

Di Sattler Tel: 9326 8318 / Fax: 9421 1494  
email: [sattlerd@sundaytimes.newstld.com.au](mailto:sattlerd@sundaytimes.newstld.com.au)

home editor

Sandra Peterson Tel: 9326 8405 / Fax: 9421 1494  
email: [petersons@sundaytimes.newstld.com.au](mailto:petersons@sundaytimes.newstld.com.au)

feature writer

Mara Fox Tel: 9326 8281  
email: [foxm@sundaytimes.newstld.com.au](mailto:foxm@sundaytimes.newstld.com.au)

stylist

Malvina Stone

design

Kim Marocchi, Michael Moralee

production

Saliya Goonewardene, Martin Saxon

administration

Bev Bott

advertising

Andrea de Kauwe Tel: 9326 8336  
email: [dekauwea@sundaytimes.newstld.com.au](mailto:dekauwea@sundaytimes.newstld.com.au)  
Thelma Sims Tel: 9326 8459  
email: [simst@sundaytimes.newstld.com.au](mailto:simst@sundaytimes.newstld.com.au)

our cover

Location: Empire, Osborne Park  
Model: Kelly from Scene  
Dress: Review, Shop 2/62 Bayview Tce, Claremont  
Stylist: Malvina Stone  
Photographer: Richard Hatherly



SANDRA PETERSON  
home editor



Fairy Light Wall Lamp from the Lladró Re-Cyclos collection.

24

## merry christmas

The countdown to Christmas has officially begun and, once again, we find ourselves shopping 'til we drop and indulging in rich, festive fare. This week we showcase some great gift ideas, table settings and decorations that are sure to enhance your holiday celebrations. The **HOME** team would like to wish everyone a safe and happy Christmas and New Year. **HOME** is in recess for the next three weeks but will be back inside *The Sunday Times* on January 6.

- 4 **build**  
Bungalow by Dale Alcock Homes
- 6 **build**  
Riviera by Affordable Living
- 8 **first homebuyers**  
First homebuyers are flocking to Coolbellup's Lennox development
- 10 **first homebuyers**  
How HomeStart is helping its clients get their feet on the property ladder
- 12 **at home**  
Feast your eyes on an award-winning, island-inspired abode in Broome
- 14 **home help**  
Shannon Lush's handy household hints
- 15 **marketplace**  
Turning animal antics into works of art
- 18 **christmas**  
Splashing out on some stylish table settings and accessories will help you make the most of the holiday season
- 20 **most wanted**  
Pretty present ideas for the special ladies in your life
- 22 **shopfront**  
Santa is sure to park his sleigh at your place if you deck it out with the festive items on offer at Christmas Presence
- 24 **design**  
Leading designer Bodo Sperlein has teamed up with Spanish porcelain house Lladró to create the Re-Cyclos collection – and you could win a stunning angel-wing bowl valued at more than \$1000
- 26 **garden gurus**  
Tips for pruning your roses in December
- 28 **photo finish**  
Actor, singer and publicist John Michael Swinbank shows us his favourite things

# 10m and 12m designs from \$238,661. Choose from a range of 22 designs.

**MERRY CHRISTMAS**  
OUR DISPLAY HOMES WILL BE CLOSED FROM SUN 16 DEC AND RE-OPEN SAT 5 JAN '08



The Monterey-12



The Voyager-10



The Sunbury-12

The Renowned Collection is a specialised range of 10 and 12 metre frontage designs ■ Accent on lifestyle, with varied accommodation mixes - all bedrooms can be up, or a combination of master suite up or downstairs ■ Designs to capitalise on available views ■ Garages with the choice of front or rear access ■ Range of 22 homes to choose from

For more details: 9202 9255



**RENOWNED COLLECTION**

By In-Vogue 2-Storey Designs

65 Walters Dve, Osb Park

design

# ANGELS GET NEW WINGS

The great porcelain house of Lladró and designer Bodo Sperlein have teamed up to create art for the new era

**W**HILE some of us campaign to protect the environment or save select groups of wild animals from extinction, designer Bodo Sperlein is on a mission to salvage an ancient art form.

Since he teamed up with celebrated Spanish porcelain house Lladró, Bodo has transformed the company's traditional ornamental-based products into functional works of art.

The result is Lladró's magical new Re-Cyclos collection, which includes stunning chandeliers crafted from a mix of porcelain fairies and the latest fibre-optic technology, bowls that look like they're made from angel wings, and whimsical bottle stoppers. Each piece stands testament to Bodo's passion for porcelain.

"Many people try and put porcelain into a straight-jacket, which I don't think is very suitable because it lends itself to very fluid forms," Bodo says. "My philosophy is to create products that are aesthetically pleasing and have a function."

"It's quite funny how you can take part of a traditional Lladró ornament and turn it into a bottle stopper, which can then be used to transform a plain bottle into a sculpture."

Bodo followed a similar line of thought when designing the Papagena bowl.

Lladró Re-Cyclos collection by Bodo Sperlein, pictured below.



"When creating the bowl, we wanted to recycle an element of a Lladró figurine and give it a new life through being a functional product," he explains.

"I was really fascinated by the quality of the angel wings Lladró produces. It takes one person roughly six weeks to make one wing in plaster. There's a lot of work involved but people tend to forget this when it's on the back of an angel ornament and I thought, 'How can I use that piece and make people really appreciate it?'"

It took eight months to develop the bowl, a feat that would not have been possible without the painstaking effort of Lladró's artisans, who create everything by hand.

"You can't use machines to create these products," Bodo says.

"Lladró believes that preserving skills and tradition is the way forward. They have the best technicians and are very innovative."

"As a designer, I'm incredibly proud that Lladró chose me to be part of this so-called revolution."

\* Lladró Re-Cyclos collection by Bodo Sperlein can be ordered from David Jones in Hay St, Perth.



## WIN A LLADRÓ PAPAGENA BOWL

**HOME** and Lladró are giving you the chance to win a stunning white Papagena Bowl from the Re-Cyclos collection by Bodo Sperlein, valued at over \$1000.

Based on the traditional Lladró angel's wing element, this stunning centrepiece highlights the unique intricacies of Lladró's craftsmanship.

Just one of the many pieces in the Lladró collection, the Papagena bowl is testament to the detail and skill involved in creating these works of art.

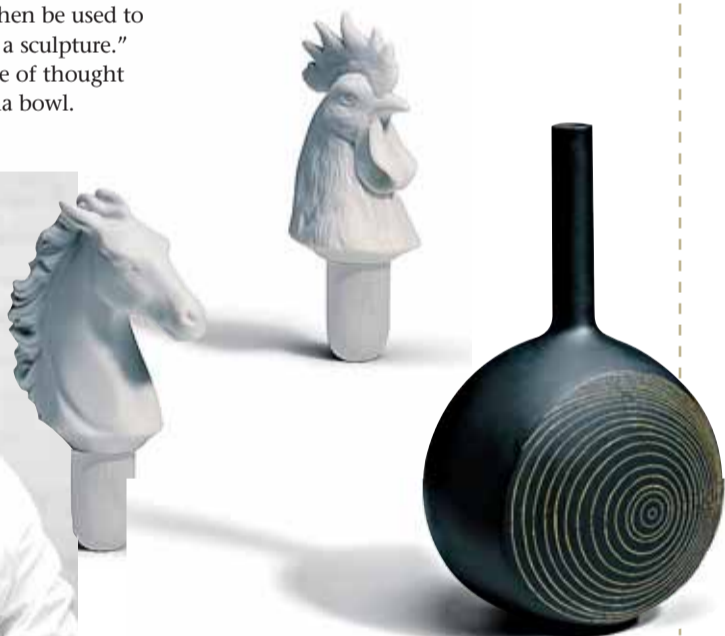
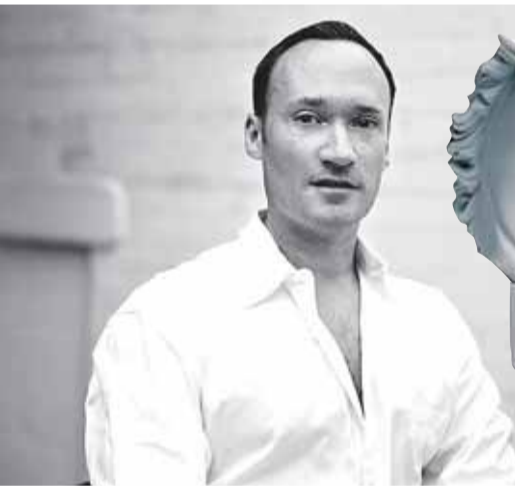
Each Lladró creation exhibits the highest level of quality and technical precision, which has made their name synonymous with excellence.

The Lladró porcelain collection has something to complement any decorating style, from modern-day classics to traditional objets d'art.

For your chance to win, simply write your name, address and phone number on the back of an envelope and mail it to:

**The Sunday Times / Lladró Competition**  
GPO Box 2968, Perth, WA 6800

The winner will be selected at random from all entries received by noon on Friday, December 14, 2007, and notified by mail. See ReadersMART Public Notices for our privacy statement.



To find all the right Waterwise plants, call 13 10 39 or visit [watercorporation.com.au](http://watercorporation.com.au)



water for all, forever **WATER CORPORATION**