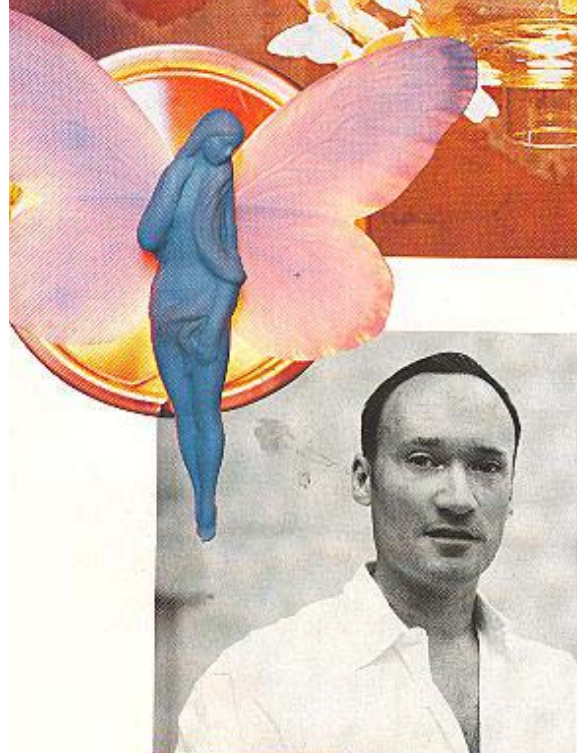


Far Left Fairy Light wall light
Left Freeze Frame Butterflies hanging lamp
Above Organica candle beaker



IN BRIEF

EDUCATION: 3D Design specialising in ceramics from the Camberwell College of Arts, London

EXHIBITIONS: Over 60 objects from the Re-Cyclas Magical Collection were presented in September 2006 at Maison et Objet, Paris, Habitat in Valencia and 100% Design, London

INSPIRED BY: Oscar Niemeyer buildings, "I love his biomorphic inspired buildings, sculptural and absolutely stunning, my number one architect!"

IS ADDICTED TO: White truffles or Tortuffe Bianco, "Once you taste them you are hooked, I always go to Italy between October-December to eat these amazing fungi"

WISHES FOR: A waterbus system in place on the River Thames similar to the Vaporettos in Venice

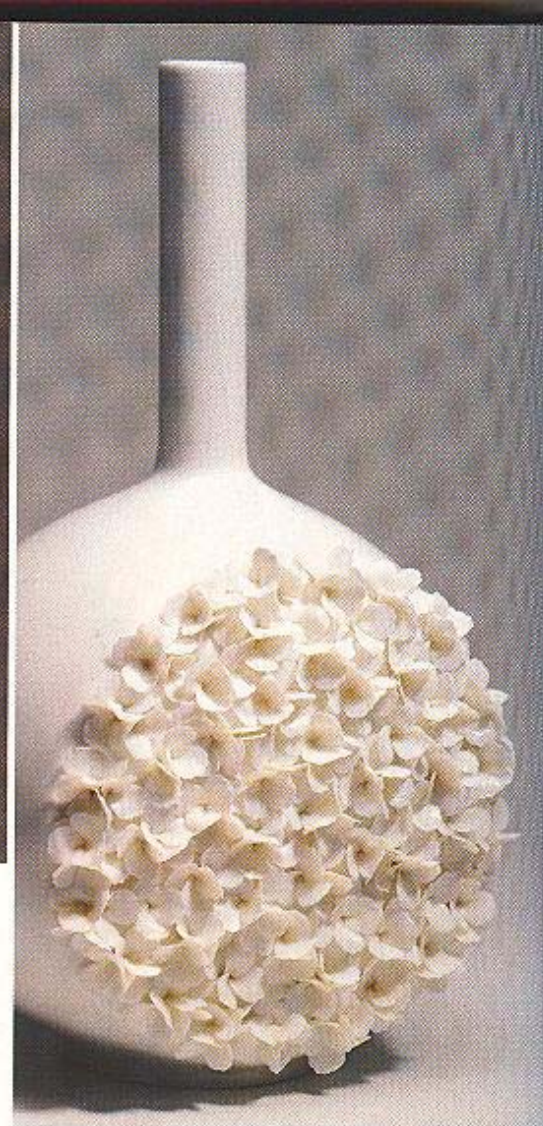
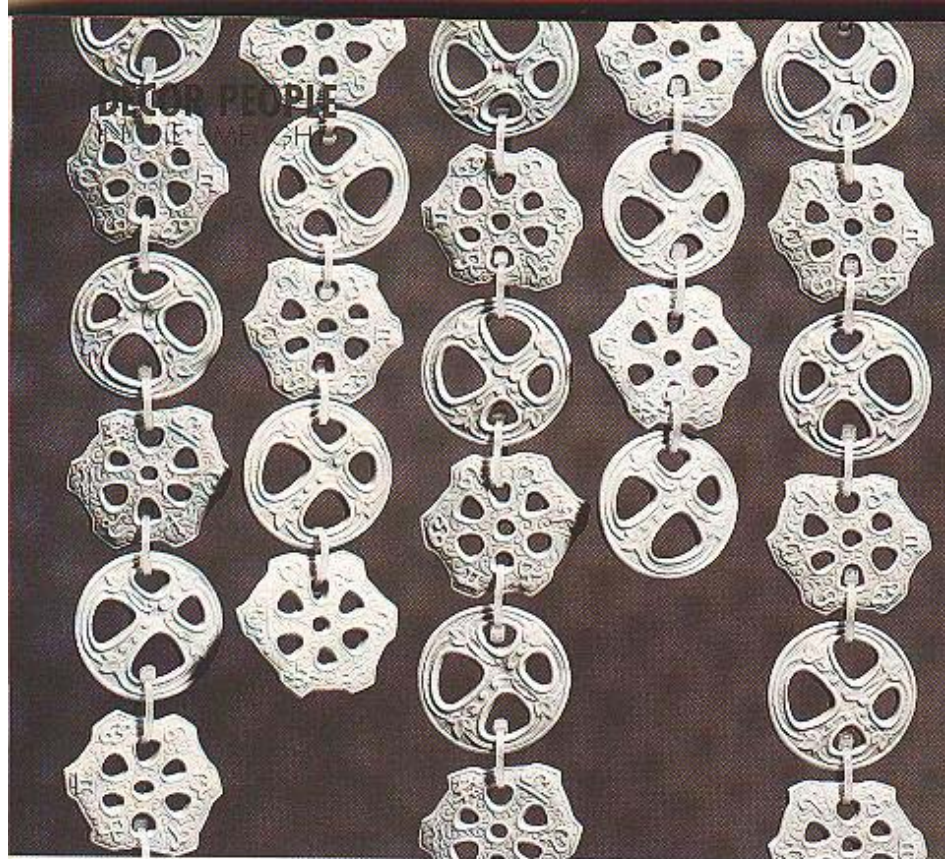
BODO SPERLEIN

Lending a contemporary touch to Lladro's delicate figurines, he translates ephemeral nature into eternally resilient ceramics

Dainty figurines, animals poised gently, butterflies and floral compositions are what one typically associates with Spanish porcelain manufacturer Lladro. Impressed by Lladro's love for nature and attention to detail evident in their renowned figurines, gifted German designer Bodo Sperlein utilised his passion for biomorphic shapes when crafting pieces in association with the Spanish brand for their well received Recyclas Magical Collection. This artistic project was based on the development of unique works created using its figurines, and endowing them with new meanings and readings.

For its second edition, Bodo took fragments from Lladro pieces and reworked them to produce new elements in which every component was respected and further underscored. What resulted was an exclusive series of decor objects, lighting and jewellery. Borrowing themes from the forest such as the magic of animals and fantastic creatures living in it, his ornaments are perfect for creating dreamlike, fantasy ambiances playing with light and shadows.

"Nature offers unrivalled, unlimited inspiration," says Sperlein, captivated by the fluidity of organically occurring shapes. "Nature is unpredictable and I like the surprises on offer – colours, moods, seasonal changes." All of these are very much in attendance in his works. His curtain made with fashion accessories from his Talismania collection, vases using fragments from other existing ones by Lladro, a chandelier with scores of delicate butterflies hanging from it, and horses' heads from his Movement collection transmuted into stoppers for wine decanters – each contain details from various pieces yet are resplendent in their own individual personality.



NATURE IS TRANSIENT, HOWEVER,
 PORTRAYING NATURE IN CLAY HAS
 LONGEVITY; PIECES OF FIRED EARTH SURVIVE
 INTACT FOR THOUSANDS OF YEARS



Clockwise from right
 Bacchus bottle stoppers
 White Papagena bowl
 Talismania room
 divider curtain
 Tapestry Flowers
 Canvas vase

Bodo Sperlein, London.
 E-mail: bodo@
 bodosperlein.com

It made perfect sense to employ ceramics as a vehicle for expressing his intentions and emotions. Having experimented on various occasions with porcelain and ceramics, Bodo's work has always focused on the industrial possibilities of these materials. "As clay is a natural material, it is perfect to use in fluid and organic shapes and applications."

His personal compatibility aside, Sperlein's emotional connection with his craft is embedded within the historical potential of the medium, "Nature is transient, however, portraying nature in clay has longevity; pieces of fired earth survive intact for thousands of years. I hope future generations will see the amazing details and skills involved in producing high quality hand made porcelain or bone china in the same way as we admire ancient Roman, Greek and Celtic ceramics artefacts."

What is also apparent is his deep respect for tradition. Impressed by Lladro's unique and highly trained craftsmen taking their time-honoured skills to new heights, Bodo was inspired to draw the eye of the beholder to a contemporary, decorative but functional style with this collection.

Even before his association with Lladro, Sperlein frequently used handmade bone china flowers produced expressly by British artisans in Staffordshire, thus maintaining an art almost extinguished in the UK. "I think it is the responsibility of the designer to preserve traditional production skills and show through their work that good contemporary products can be produced in high quality, old fashioned materials even while pushing boundaries; thus ensuring that these skills are preserved for future generations."

Nothing is destroyed in nature; everything is regenerated and evolves – this was the concept driving Lladro's innovative, creative proposal and Bodo refines it further. "I strongly believe that high quality hand made products have a future and are a reaction against the cheap, throw-away products available globally. People need to realise that luxury high quality products are the most environmentally friendly option we have – they are not produced to be thrown away and constantly replaced, but to be treasured and passed on to the future generations as heirlooms." ♦

Simona Terron